



## ILLUSTRATIONS

**ABOVE:** *Sir William Yelverton, 1472, from Rougham, Norfolk.*

**FRONT COVER:** *Margaret, wife of Nicholas Gaynesford, 1503, from Carshalton, Surrey.*

**BACK COVER:** *(TOP) Sir Thomas Bullen, K.G., Earl of Wiltshire and Ormond. Father of Anne Bolyen, 2nd wife of Henry VIII, 1538, from Hever, Kent; (BOTTOM LEFT) Joan, Lady Cromwell, 1490, from Tattershall, Lincolnshire; (BOTTOM RIGHT) Sir John d'Abernon II, 1327, from Stoke d'Abernon, Surrey.*

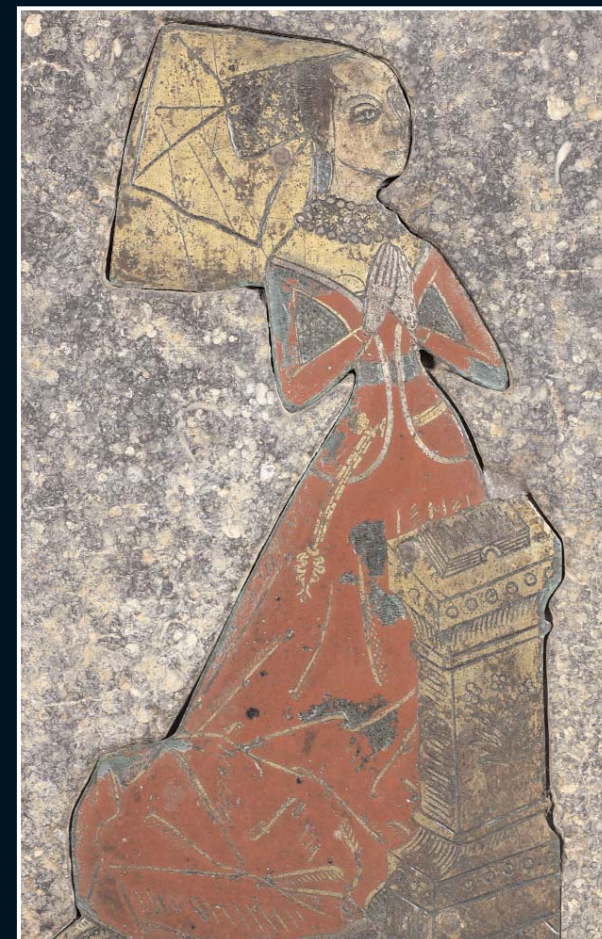


# Monumental Brass Society

[www.mbs-brasses.co.uk](http://www.mbs-brasses.co.uk)

# Monumental Brass Society

MEMBERSHIP



[www.mbs-brasses.co.uk](http://www.mbs-brasses.co.uk)

The Society was founded in 1887 to preserve and record monumental brasses. Initially it was known as the Cambridge University Association of Brass Collectors. Later it was renamed the Monumental Brass Society. From a membership of 60 in 1887, the Society has grown to around 500 today.

Early research into brasses focused chiefly on English brasses of the medieval and early modern periods. Today, however, the field is much wider. Chronologically, it extends to brasses of the nineteenth and twentieth centuries, and geographically to those of Continental Europe. Incised slabs are also the subject of growing interest. Areas of current research include the artistic context of brasses, workshop organisation, and the self-image of the commemorated.

Membership will also benefit those with an interest in local history, genealogy, armour, the study of costume, and heraldry.

## AIMS

- **To encourage** the appreciation of brasses, indents of lost brasses and incised slabs by publications, lectures and meetings.
- **To preserve** brasses by assisting with grant funding conservation and providing advice on their care.
- **To promote** the study of brasses, indents of lost brasses and incised slabs, and to encourage and disseminate original research.
- **To record** lost and stolen brasses and those remaining in private hands.

## MEMBERSHIP BENEFITS

- **Illustrated lectures** with discussions and an opportunity to meet other members.
- **Transactions**, published annually with articles on brasses and incised slabs.

- **Bulletin**, published three times a year, with information about current activities, work in progress and new literature.
- **Excursion** to churches of interest.
- **One-day meetings** at churches and periodic residential events.

## ACTIVITIES OF THE SOCIETY

The Society provides advice and assistance to churches on the care and preservation of their brasses.

The Society is actively involved in publishing county surveys. Volumes are fully illustrated and are proving an important aid to the study of monumental brasses and family history (see website for further details).

The Society continues to influence brass-rubbing activities and promotes good practice amongst its membership.

## HOW TO JOIN

Please complete the application section and send it together with your subscription to:

*Christian Steer, Hon Secretary  
Monumental Brass Society  
8 Shefford Lodge, Link Road  
Newbury, Berkshire RG14 7LR  
Email: christianosteer@yahoo.co.uk*

Annual subscription	£25
Overseas subscription	£25 or US\$45
Second person at same address, receiving no literature	£10
Annual subscription (in full time education or if under 18 years)	£12.50
Annual subscription (schools, institutions)	£25

Visit our website on [www.mbs-brasses.co.uk](http://www.mbs-brasses.co.uk)

FULL NAME (*Mr/Mrs/Miss etc*) \_\_\_\_\_

ADDRESS \_\_\_\_\_

TEL/EMAIL \_\_\_\_\_

DATE \_\_\_\_\_

DATE OF BIRTH (*if under 18yrs*) \_\_\_\_\_

SIGNATURE \_\_\_\_\_

### Additional member at above address:

FULL NAME (*Mr/Mrs/Miss etc*) \_\_\_\_\_

### BANKERS ORDER

Please pay to the account of the MONUMENTAL BRASS SOCIETY at Barclays Bank PLC, Barclays Business Centre, Holborn and Chancery Lane Branch, 147 Holborn, London EC1N 2NU (Sort code 20-41-41, Account no. 10660957)

THE SUM OF £ \_\_\_\_\_

(IN WORDS \_\_\_\_\_)

IMMEDIATELY/NEXT 1st JANUARY (see note below) and the same sum EACH YEAR ON 1st JANUARY until further notice. This instruction cancels any previous order in favour of the Monumental Brass Society.

NAME OF BANK \_\_\_\_\_

BRANCH \_\_\_\_\_

ADDRESS OF BRANCH \_\_\_\_\_

SORT CODE \_\_\_\_\_

NAME OF ACCOUNT TO BE DEBITED \_\_\_\_\_

ACCOUNT NUMBER \_\_\_\_\_

*Note: For applications made between 1st January and 30th September, delete 'NEXT 1st JANUARY'; for other applications delete 'IMMEDIATELY'.*

SIGNATURE \_\_\_\_\_ DATE \_\_\_\_\_